

DIAGNOSTIC FLOWCHART FOR EARLY-ONSET ATAXIAS

EUROPEAN REFERENCE NETWORKS
FOR RARE, LOW PREVALENCE AND COMPLEX DISEASES

Share. Care. Cure.



Disclaimer:

“The European Commission support for the production of this publication does not constitute endorsement of the contents which reflects the views only of the authors, and the Commission cannot be held responsible for any use which may be made of the information contained therein.”

More information on the European Union is available on the Internet (<http://europa.eu>).

Luxembourg: Publications Office of the European Union, 2019

© European Union, 2019

Reproduction is authorised provided the source is acknowledged.



INTRODUCTION TO THE EUROPEAN REFERENCE NETWORK FOR RARE NEUROLOGICAL DISEASES (ERN-RND):

ERN-RND is a European Reference Network established and approved by the European Union. ERN-RND is a healthcare infrastructure which focuses on rare neurological diseases (RND). The three main pillars of ERN-RND are (i) network of experts and expertise centres, (ii) generation, pooling and dissemination of RND knowledge, and (iii) implementation of e-health to allow the expertise to travel instead of patients and families.

ERN-RND unites 32 of Europe's leading expert centres as well as 10 affiliated partners in 20 member states and includes highly active patient organizations. Centres are located in Austria, Belgium, Bulgaria, Czech Republic, Denmark, Estonia, Finland, France, Germany, Hungary, Italy, Latvia, Lithuania, Luxembourg, Malta, Netherlands, Poland, Slovenia, Spain and the UK.

The following disease groups are covered by ERN-RND:

- Ataxias and Hereditary Spastic Paraplegias
- Atypical Parkinsonism and genetic Parkinson's disease
- Dystonia, Paroxysmal Disorder and Neurodegeneration with Brain Ion Accumulation
- Frontotemporal Dementia
- Huntingtons' Disease and other Chorea
- Leukodystrophies

Specific information about the network, the expert centres and the diseases covered can be found on the networks web site www.ern-rnd.eu.

Recommendation for clinical use:

The European Reference Network for Rare Neurological Diseases developed the Diagnostic Flowchart for early-onset Ataxias to help guide the diagnosis. The Reference Network recommends the use of this Diagnostic Flowchart.

DISCLAIMER

Clinical practice guidelines, practice advisories, systematic reviews and other guidance published, endorsed or affirmed by ERN-RND are assessments of current scientific and clinical information provided as an educational service. The information (1) should not be considered inclusive of all proper treatments, methods of care, or as a statement of the standard of care; (2) is not continually updated and may not reflect the most recent evidence (new information may emerge between the time information is developed and when it is published or read); (3) addresses only the question(s) specifically identified; (4) does not mandate any particular course of medical care; and (5) is not intended to substitute for the independent professional judgement of the treating provider, as the information does not account for individual variation among patients. In all cases, the selected course of action should be considered by the treating provider in the context of treating the individual patient. Use of the information is voluntary. ERN-RND provided this information on an "as is" basis, and makes no warranty, expressed or implied, regarding the information. ERN-RND specifically disclaims any warranties of merchantability or fitness for a particular use or purpose. ERN-RND assumes no responsibility for any injury or damage to persons or property arising out of or related to any use of this information or for any errors or omissions.

METHODOLOGY

The development of the Diagnostic Flowchart was done by the Disease group for Ataxia and Hereditary Spastic Paraplegias of ERN-RND.

Disease group for Ataxia and Hereditary Spastic Paraplegias:

Disease group coordinators:

Enrico Bertini¹², Alfons Macaya⁹, Caterina Mariotti⁶, Rebecca Schuele-Freyer¹⁸

Disease group members:

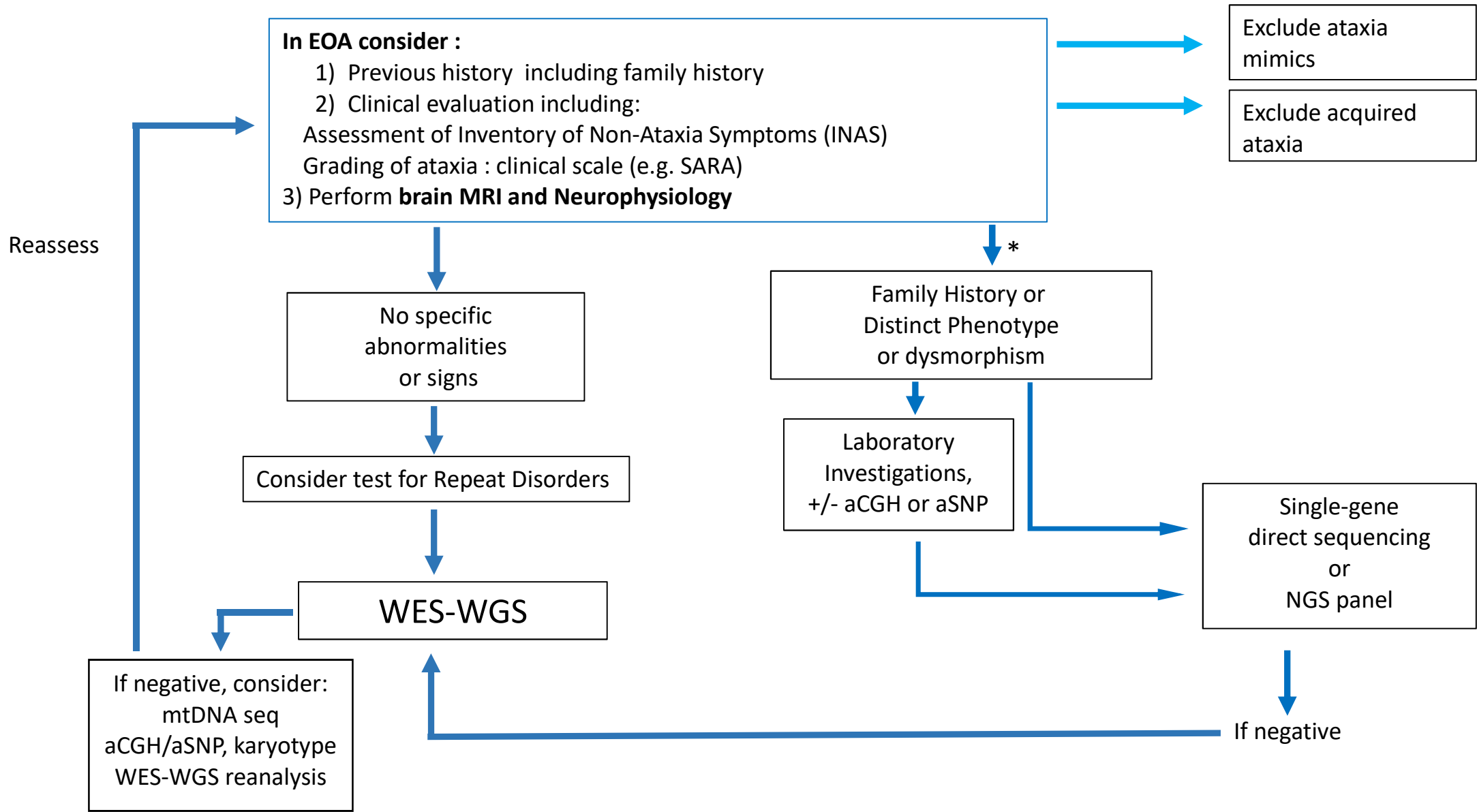
Anne Torvin Møller¹, Maria Teresa Dotti², Antonio Federico², Alexandra Durr³, Michael Freilinger⁴, Sandy Siegert⁴, Sylvia Boesch⁵, Wolfgang Nachbauer⁵, Isabella Moroni⁶, Lorenzo Nanetti⁶, Franco Taroni⁶, Jiri Klempir⁷, Esteban Muñoz⁸, Mar O'Callaghan⁸, Andrés Nascimento⁸, Alejandra Darling⁸, Carlos Ortez⁸, Josep Gámez⁹, Maria Salvadó⁹, David Gómez-Andrés⁹, Thomas Klopstock¹⁰, Susanne Schneider¹⁰, Martin Vyhánek¹¹, Alena Zumrová¹¹, Jaroslav Jerabek¹¹, Klara Hrubá¹¹, Ginevra Zanni¹², Maurizio Petrarca¹², Gessica Vasco¹², Francesco Nicita¹², Maria Judit Molnar¹³, Bart van de Warrenburg¹⁴, Michèl Willemsen¹⁴, Judith van Gaalen¹⁴, Charlotte Haaxma¹⁴, Margit Lill¹⁵, Thomas Klockgether¹⁶, York Hellenbroich¹⁷, Alexander Münchau¹⁷, Sinem Tunc¹⁷, Martje Pauly¹⁷, Rebecca Herzog¹⁷, Ludger Schöls¹⁸, Ingeborg Krägeloh-Mann¹⁸, , Matthis Synofzik¹⁸, Peter Martus¹⁸, Massimo Pandolfo¹⁹, Paola Giunti²⁰, Julie Vallortigara²⁰, Fran Borovecki²¹, Joanna Pera²², Kristl Claeys²³, Berry Kremer²⁴, Deborah Sival²⁴, Borut Peterlin²⁵, Damjan Osredkar²⁵, David Neubauer²⁵, Norbert Kovacs²⁶, Bela Melegh²⁶, Kinga Hadziev²⁶, Judith Zima²⁶, Mary Kearney²⁷, Lori Renna Linton²⁷

¹Aarhus Universitetshospital, ²AOU Siena, Italy, ³Assistance Publique-Hôpitaux de Paris, Hôpital Pitié-Salpêtrière, France: Reference Centre for Rare Diseases 'Neurogenetics', ⁴Center for Pediatric Rare Neurological Diseases / Dpt. of Pediatrics, Medical University of Vienna, ⁵Center for Rare Movement Disorders / Dpt. of Neurology, Medical University Innsbruck, ⁶Foundation IRCCS neurological institute Carlo Besta – Milan, Italy, ⁷General University Hospital in Prague, Czech Republic, ⁸Hospital Clínic i Provincial de Barcelona y Hospital de Sant Joan de Déu, Spain, ⁹Hospital Universitari Vall d'Hebron, Spain, ¹⁰Klinikum der Universität München, Germany, ¹¹Motol University Hospital, Czech Republic, ¹²Pediatric hospital Bambino Gesù, Rome, Italy, ¹³Semmelweis University, Hungary, ¹⁴Stichting Katholieke Universiteit, doing business as Radboud University Medical Center Nijmegen, Netherlands, ¹⁵Tartu University Hospital, Estonia, ¹⁶Universitätsklinikum Bonn, Germany, ¹⁷Universitätsklinikum Schleswig-Holstein, Germany, ¹⁸Universitätsklinikum Tübingen, Germany, ¹⁹Université libre de Bruxelles, Belgium, ²⁰University College London Hospitals NHS Foundation Trust, United Kingdom, ²¹University Hospital Cente Zagreb, University Department of Neurology, ²²University Hospital in Krakow, Poland, ²³University Hospitals Leuven, Belgium, ²⁴University Medical Center Groningen, Netherlands, ²⁵University Medical Centre Ljubljana, Slovenia, ²⁶University of Pécs, Hungary, ²⁷Patient representative

Flowchart development process:

- Development of flowchart – September 2019 – July 2020
- Consent on document by whole disease group – July 2020

Early Onset Ataxia



Notes:

WES-WGS could be initiated, if timely available, parallel to the investigations following brain MRI

*Distinct EOA phenotypes and targeted investigations reviewed in Brandsma R et al., Eur J Paediatr Neurol 2019

Abbreviations:

aCGH – microarray-based Comparative Genomic Hybridisation

aSNP – microarray-based testing for Single Nucleotide Polymorphisms

mtDNA seq – Mitochondrial DNA sequencing

MRI – Magnetic Resonance Imaging

NGS – Next Generation Sequencing

WES – Whole Exome Sequencing

WGS – Whole Genome Sequencing



https://ec.europa.eu/health/ern_en



European
Reference
Network

for rare or low prevalence
complex diseases

🌐 **Network**
Neurological Diseases
(ERN-RND)

● **Coordinator**
Universitätsklinikum
Tübingen — Deutschland

Co-funded by the European Union



www.ern-rnd.eu